

BTC
SEASON
2018





Acknowledgement of Country

Bendigo Theatre Company is on Jaara land, part of the Kulin Nation, and the Committee of Management acknowledges its traditional custodians.

Disclaimer

Details in this brochure are correct at the time of publication. The Committee of Management reserves the right to modify the programmed season, artists, prices and venues should the need arise.



Hello and welcome to BTC's 2018 Season.

The Committee of Management are particularly proud of this season, as we believe it to be the first in the 65 year history of our company that we have launched a fully-scoped theatrical season.

BTC prides itself on constant evolution, innovation and drive to improve. While the professionalism and public image of our company has been on a steady incline for the last few years, the aim of our company remains steady. We believe in the power of art to transform and to heal. Theatre brings people together in myriad fashions and transcends race, gender, religion, sexuality and ability. It is community-building, empowering, relevant and integral to today's society. Our aim is to provide opportunities for members of the community to enjoy and develop their theatrical talents locally and to gain experience needed to achieve their goals for future careers. We are delighted that many have attained these goals and are now working at a professional level.

In 2018 we are furthering our commitment to this aim, by programming four masterclasses, led by industry experts, in our inaugural Workshop Season. For musical-lovers, our offer is plentiful and diverse. Tribe Youth

Theatre will present the much-loved *Grease*, perfectly complemented by our mainstage musical *Fiddler on the Roof*, a story of tradition, repression, prejudice and diaspora which continues to evoke common ground for audiences today — wherever they are. We see the return of our powerful *TENx10* project, and our ever successful summer pantomime, this year the loved story of *Beauty and the Beast*. Tribe's *Wyrd Sisters* will have families in tears of laughter, while Agatha Christie's *The Mousetrap* will leave you spellbound as it has done to audiences on the West End for over 65 years.

Each year we are privileged to be associated with over 6000 members of our community, involved in production teams and behind-the-scenes activities, as cast members and musicians, and as patrons who support our productions. On behalf of the BTC Committee of Management I would like to offer our warmest thanks to our members and the people of Bendigo and surrounds for your continued support and patronage; it is because of this that we continue to flourish.

A handwritten signature in black ink that reads "Abe Watson". The signature is fluid and cursive, with a long horizontal line extending to the right.

Abe Watson

Vice President, Bendigo Theatre Company
Programme Director, Season 2018

BTC
SEASON
2018





INTRODUCTION

Bendigo Theatre Company was established in 1952 as the Bendigo Operatic Society. Sixty-five years on it is a thriving organisation that is firmly entrenched in the vibrant and expanding local Arts landscape.

Local business benefits directly from Bendigo's Arts scene. Targeted and successful exhibitions at The Bendigo Art Gallery, cultural events such as the Easter festival and the Enlighten project, new events such as White Night, the resurgence of interesting and varied trading in View Street, all contribute to increasing Bendigo's appeal as a cultural and tourism destination.

A 100% increase in theatrical venues in 2015 expanded Bendigo's capacity for the number and scale of productions. This factor has allowed Bendigo Theatre Company to broaden our activity exponentially, since a rising tide lifts all boats.

With our activity and output at an all-time high, the demand for BTC to curate a season with broad demographic appeal is tremendous.

To this end, in 2018 we will stage 4 distinct seasons:

- 1. Workshop Season**
- 2. Tribe Youth Theatre Season**
- 3. The Shed Season**
- 4. Major Musical**

Each of our seasons provides opportunities for on-stage and off-stage community involvement. Additionally, there are a myriad of opportunities for local business to align with an event or events that reflect Bendigo's rich, creative, talented and philanthropic community.



WORKSHOP SEASON

One undeniable truth about theatre is that the performance is only the tip of the iceberg. Without the cumulative effort of so many people behind the scenes, a production simply would not reach the stage.

Bendigo Theatre Company is committed to providing opportunities to learn about the multitude of behind-the-scenes disciplines that contribute to each production.

We are always on the look out for new people to join our thriving company and we understand that not everybody has the burning desire to be on stage. The workshop season is designed as a platform for the next generation of backstage theatre enthusiasts. We are offering the following professionally led masterclasses.

Adam Lyon

AUDITION SUCCESS 101

Adam Lyon graduated from Victorian College of the Arts Opera Performance degree.

There are always 3 auditions:

- the one in your bedroom
- the real one, and
- the one on the way home

In this workshop you will cover casting briefs, song selection, audition presentation, common audition elements.

[Click here to buy tickets.](#)

To read more about Adam go to www.mradamlyon.com



Kyrilee Bodin

STAGE MANAGEMENT

The stage manager is key to the success of any theatrical production. Kyrilee is a long-term BTC member and professional stage manager.

In this workshop you will learn how a production is created from the early stages to house curtain coming down. It will cover how the various technical areas of theatre come together into a seamless show at the hand of the stage manager.

[Click here to buy tickets.](#)



FEBRUARY 24

MEMBERS \$52 | NON MEMBERS \$82

JUNE 16

MEMBERS \$52 | NON MEMBERS \$82

BTC
SEASON
2018

Rob Sowinski

LIGHT & SCENIC DESIGN

Rob is lighting and set designer based in Melbourne working across all forms of theatre as well as architectural lighting and performance logistics. He is resident

designer for Lyric Opera of Melbourne and Arts Events Australia, and collaborates with a range of companies on national and international projects.

Participants will be introduced to different lights and effects. They will discuss the process required and elements of a fully functional and successful scenic design and will critique a number of examples.

[Click here to buy tickets.](#)

Read more about Rob at www.robsowinski.com

SEPTEMBER 8

MEMBERS \$52 | NON MEMBERS \$82



Dean Bryant

THEATRE DIRECTION

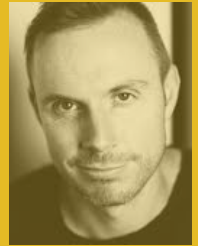
Dean is currently Associate Director at Melbourne Theatre Company. He is Worldwide Associate Director of Priscilla, Queen of the Desert – The Musical and is a graduate of the Western Australian Academy of Performing Arts.

Our Theatre Direction Workshop will teach participants about the role of the director within a theatrical production. This workshop will cover production selection; design for theatre; casting; the rehearsal period; previews and performance; audience and critical response; and examples Dean's recent productions including Little Shop of Horrors, Born Yesterday, Sweet Charity and Vivid White.

To read more about Dean [click here](#)
To book tickets [click here](#)

NOVEMBER 24

MEMBERS \$52 | NON MEMBERS \$82



Terry Pratchett's

Wyrd Sisters

Adapted by
Stephen Briggs

Directed by
Kerry Turpie



TRIBE DRAMA

Tribe is a Youth Theatre Company for Central Victorian secondary school students/teenagers to meet people around their own age with similar interests.

Following on from the success of the 2017 inaugural musical 'Barnum', Tribe is expanding their offering to include both a drama and a musical in 2018.

From the imaginative workings of the perplexing mind of Terry Pratchett comes this tale of three witches, a wicked duke and duchess, the ghost of the murdered king, dim soldiers, strolling players and a land in peril.

With a splash of Shakespeare and a smidgeon of the Marx Brothers, audiences will delight in the Macbethian tale from Discworld.

Tribe offers to young people who are interested to learn the craft of theatre the opportunity to deputise each adult held position in our productions, so that we are constantly mentoring the next generation of theatre lovers.

TICKETS

\$22.00 Adult
\$20.00 Concession
\$17.00 Student
\$14.00 Child (under 12)
\$57.00 Family (2x Adult, 2x Child)

[Click here to buy tickets.](#)

April

M T W T F S S

5 6 7 8

BTC
SEASON
2018



Book, Music and Lyrics
by JIM JACOBS and
WARREN CASEY

Directed by
Vanessa Bate

By arrangement
with ORIGIN™
Theatrical

TRIBE MUSICAL

Grease turns 40 years old in 2018 and its characters and music are still just as popular today as they were on its initial release.

Set against a familiar backdrop of high school, with a well known soundtrack of classic rock 'n' roll harmonies, the story of Danny Zuko and Sandra Dumbrowski, cars, fashions, music, hobbies, entertainment, their friends and challenges faced by teenagers and a snapshot of a time in history.

Will a summer romance stand the scrutiny of high school peers?

Let our TRIBE take you on a nostalgic trip to experience the friendships, romances and adventures of a group of high school kids in their last term of high school in 1959.

Grease is the word!

TICKETS

\$22.00 Adult
\$20.00 Concession
\$17.00 Student
\$14.00 Child (under 12)
\$57.00 Family (2x Adult, 2x Child)

[Click here to buy tickets.](#)

September	M	T	W	T	F	S	S
						27	28 29 30

October	M	T	W	T	F	S	S
						4	5 6

tribe
YOUTH THEATRE

TRIBE YOUTH THEATRE SEASON

THE SHED SEASON

Bendigo Theatre Company's home at 15-17 Allingham Street is affectionately known as the Arts Shed, or just The Shed.

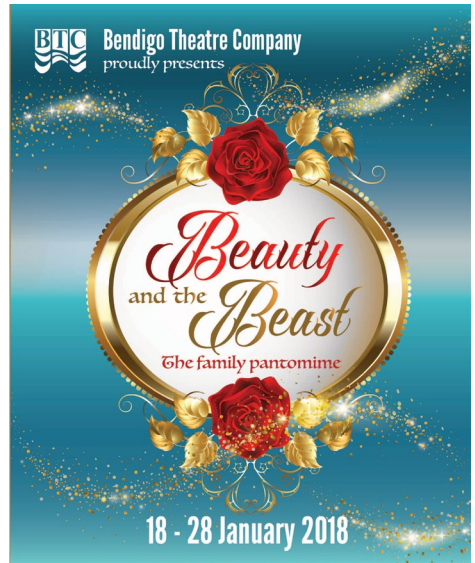
Here we rehearse nearly all of our productions and we house our sets, costumes and props. The Shed also features a 62-seat Black Box theatre, with a performance space constructed to the same dimensions as the Capital stage.

The programme to be staged in the Shed in 2018 is:

January 2018	Pantomime (10 shows)
March 2018	TENx10 plays (5 shows)
June 2018	b sharp recital (1 show)
Oct/Nov 2018	Drama (10 shows)
November 2018	b sharp recital (1 show)

During the period between March and October the Shed is in continuous use as the rehearsal venue for the major musical, Tribe's September/October musical and the Oct/Nov Drama.

The total combined audience for the Shed Season will be around 1,600 people of all ages.



PANTOMIME

An enchanted rose, dreams of a happier life and all sort of magical shenanigans form the setting for this much-adored tale of how beautiful young Belle discovered love once she was able to look beyond the mask of the Beast. Adapted by Jordan French, Lisa Fremder and Brodie Wilson this fable shows us why we should never 'judge a book by its cover'. Singing, dancing and the well-placed innuendos will delight kids of all ages!

TICKETS

\$20.00 Adult
 \$18.00 Concession/BTC Member
 \$15.00 Student
 \$10.00 Child (u12)

[Click here to buy tickets.](#)

January	M	T	W	T	F	S	S
				18	19	20	21
				25	26	27	28



SHORT PLAYS

Created to offer a bit of a ‘have a go’ to all aspects of theatre, TENx10 is a presentation of ten plays, each up to ten minutes in length.

The plays are written by local, amateur playwrights and can be directed and performed by novice or experienced people. TENx10 takes the fear out of being the new person in the group. This is a great way for people to ease into becoming involved in amateur theatre - to explore and create.

ALL TICKETS \$17.00

[Click here to buy tickets.](#)

March	M	T	W	T	F	S	S
			1	2	3	4	



VOCAL RECITALS

If you find yourself wandering the house singing show tunes then the **b Sharp Chorus** is for you. No auditions are necessary to join in this innovative natural voice chorus.

With two recitals scheduled in 2018, the June recital will focus on tunes from the Golden Age of musical theatre, while the November recital will feature songs from modern musicals.

Sit back and listen or sing along – we’re sure you’ll know the words!

ALL TICKETS \$12.00

[Click here to buy tickets for the June recital.](#)

June	M	T	W	T	F	S	S
						8	

[Click here to buy tickets for the November recital.](#)

November	M	T	W	T	F	S	S
							23

THE MOU

THE SHED SEASON

By Agatha Christie

The Mousetrap, a murder mystery written by Agatha Christie opened on London's West End in 1952, the same year the Bendigo Operatic Society was founded. Both have been running continuously ever since!

Bendigo Theatre Company is thrilled to present the world's longest running play in October and November 2018.

A whodunit set in the Great Hall of Monkswell Manor, it is complete with murder, mysterious notes, red herrings and three blind mice. It's a prime example of a twist ending - and audience members are asked to not reveal the killer.

ALL TICKETS \$27.00

[Click here to buy tickets.](#)

Oct/Nov	M	T	W	T	F	S	S
				25	26	27	28
				1	2	3	4



JUST TRAP



MAJOR MUSICAL

More than 50 years since its Broadway debut, the universal themes of *Fiddler on the Roof* continue to resonate with audiences of all generations and all cultures.

This story of Tevye's struggle to balance his rigid faith-based traditions with his hidden desire to let his daughters follow their hearts touches on values that are still relevant today. Love, pride and faith help Tevye face the oppression czarist Russia, where their lives are as precarious as the perch of a fiddler on a roof.

"In much the same way that "The Diary of Anne Frank" is not just a Jewish story, neither is "Fiddler on the Roof." "Fiddler's" strong themes of tradition, repression, prejudice and diaspora continue to evoke common ground for audiences — wherever they are. The well-crafted book and memorable songs don't hurt, of course, but they are augmented by a plot that has something for everyone, whether it's the importance of family, friction between generations or the difficult choices that accompany emigration and assimilation."

Barbara Isenberg, Los Angeles Times

Fiddler on the Roof is one of the 16 longest-running shows in the history of Broadway. In July 2018 Bendigo Theatre Company will stage this beautifully written musical at the Ulumbarra Theatre complete with a live orchestra.

Fiddler on the Roof

TICKETS

\$50.00 Adult
\$45.00 Concession/Student
\$35.00 Child (under 12)
\$150.00 Family (2x Adult, 2x Child)

[Click here to buy tickets.](#)

July

M T W T F S S

5 6 7 8

FIDDLER ON THE ROOF

Based on Sholem Aleichem stories by special permission

Book by JOSEPH STEIN | Music by JERRY BOYKIN

Produced on the New York Stage by Harold Prince

Original New York Stage Production Directed and Chorus

Adler The Roof



Commission of Arnold Perl

Music by SHeldon HARNICK | Lyrics by SHELDON HARNICK

Choreographed by JEROME ROBBINS



BENDIGO THEATRE COMPANY

2017/18 COMMITTEE OF MANAGEMENT

President John Murray

Vice President Abe Watson

Secretary Mary White

Treasurer Maureen Fleiner

General Committee:

Kristen Beever, Colin Brown, Conor Cunningham, Loretta Kingston-Brown, Julie McDonald, Stania Tresize, Vern Wall

Patron Cr. Rod Fyffe

Life Members Anne Ball, Mrs. Ball (dec.), Colin Brown, Grace Cox, Gael Emond, Greg Harris, Patricia Lyon (dec.), Jack Paynting (dec.), Annie Smith, Stania Tresize, Vern Wall, Ken Wells, Madge Welsh (dec.).

THANK YOU

We couldn't do it without you! Thank you to the following organisations and businesses for helping us to grow our commitment to producing theatrical opportunities for central Victoria.

WINE PARTNER

DUNES & GREENE

VENUE PARTNER

The logo for Girton Grammar School Bendigo features the word "Girton" in a large, dark red serif font. To the left of the "G" are four yellow stars of varying sizes. To the right of "Girton" are the words "Grammar" and "School Bendigo" in a smaller, dark red sans-serif font, stacked vertically.

TICKETING PARTNER



If you are interested in partnering with BTC please contact
Kristen Beever, BTC marketing coordinator - kristen@tbcc.com.au



Why business should become involved with community theatre

- To demonstrate to the local community your commitment to Bendigo's cultural and economic development
- To complement and extend your existing marketing activity
- Because your sponsorship can fulfil many aspects of your overall marketing strategy and it is a tax deduction
- Because the Arts are important



Contact us to find out about our corporate sponsorship opportunities please email our secretary at bendigotheatrecompany@gmail.com